

SC6000

Industrial Controller

Highlights

The SC6000 is the ultimate Datalogic industrial controller specifically designed for omni-directional multi-side reading tunnels. It offers all the necessary computational resources for very challenging applications where throughput, reliability and availability are key factors to succeed.

• PERFORMANCE

SC6000 offers the large benefit to dedicate the all internal resources to the management of the reading cluster and to interface the multi-reading tunnel to the Host system; up to 31 readers can be connected to satisfy the most demanding applications.

• INTEGRATION

The SC6000 is a modular and flexible industrial controller that, with the same model, fulfils the different requirements of basic and redundant system configurations. Integration with RFID and vision system is easy thanks to SC6000 flexibility of use and high configurability; SC6000 efficiency in hybrid solutions represents a crucial competitive advantage while dealing with challenging customer requirements.

• RELIABILITY AND AVAILABILITY

The removable Compact Flash, serving the need of full parameters and firmware backup, firmly contributes to achieve high level of reliability. The redundant configuration, through the cooperation of two SC6000, provides an unrivalled availability of the system. SC6000 can be quickly replaced thanks to the Datalogic automatic replacement function, DARP™, that simply restores the system functionalities, connecting the original Compact Flash in a new device.

• BUILT-IN CONNECTIVITY

A large number of communication interfaces are provided to satisfy all the most common demands. Ethernet, always available, can be optionally combined to Profibus and DeviceNet interfaces.

• EASY OF SETUP

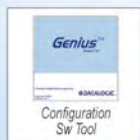
SC6000 parameters are accessible through Genius™, the standard Datalogic configuration program that helps to automate and speed up the network configuration and calibration.

• EASY OF USE

A practical 4-lines display with keyboard increases the SC6000's ease of use by offering a simple and complete human interface without the need of a PC. Basic information is directly available on the display while intuitive LEDs informs about the status of the device as well as of the entire network. SC6000 is constantly monitored by internal diagnostic routines that promptly notify failures and malfunctioning to users as well as to Datalogic WebSentinel™, the new surveillance software solution for the total remote control and monitoring of the readers.

• ENERGY EFFICIENCY

SC6000 performs the Energy Saving function that allows saving energy and extending the life of the controlled reader.



Features

- Industrial controller for reading stations
- DARP™ (Datalogic Automatic Replacement Procedure)
- Single and Redundant configuration
- GENIUS™ configuration
- Display and 6-key keypad diagnostics/statistics
- Robust alloy case
- Built-in Ethernet, Profibus DeviceNet connectivity
- Modem connection

Applications

- Parcel sorting system
- Dimensioning Weighting Scanning System
- Postal applications
- Automatic baggage handling
- Cargo applications
- Loading/Unloading systems

SC6000

Specifications

Technical Data

Operating Temperature	0 to 50 °C	
Storage Temperature	-20 to 70° C	
Humidity	0 to 90% non condensing	
Protection Class	IP64	
Ram Memory	16 MB	
Storage Memory	2MB FLASH; 32 MB COMPACT FLASH	
Display	4 lines x 20 characters	
Keypad	6 keys	
Staus Leds	10 LEDs (POWER, TX/RX DATA, ETHERNET, PS, PS AUX, TACH, NETWORK, SCANNER, CONTROLLER)	
Models/Interfaces	Main: RS232/RS485F isolated Aux: RS232 Modem: RS232	
Available models	SC6000-1200	Built-in Ethernet
	SC6000-1215	Ethernet and DeviceNet
	SC6000-1211	Ethernet and Profibus
	SC6000-1230	Ethernet and Ethernet
I/O signals	3 inputs/6 outputs: isolated	
Sensor signals	3 inputs (TACH, PS, PS AUX): isolated	
Relat signals	3 outputs	
Power Supply	10 to 30 VDC	
Consumption	< 10 W	
Dimensions (L x W x H):	319.5 x 248.7 x 99.7 mm (12.58 x 9.79 x 3.93 in)	
Weight:	3.3 Kg (7.26 lbs)	

Applications



Airport baggage sorting systems



Automated warehousing identification systems

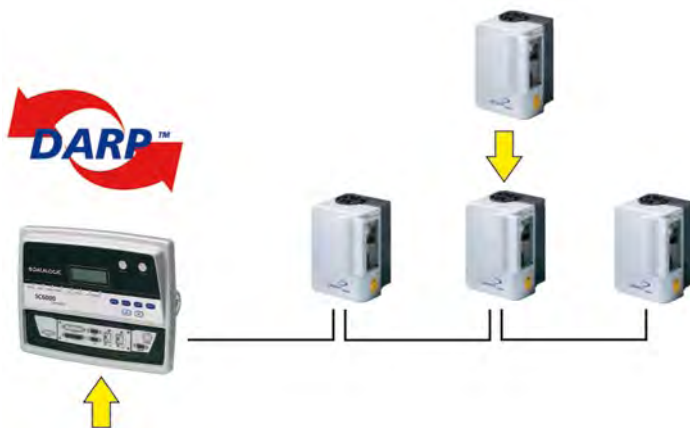


Postal/Courier parcel sorting and tracking

DARP™ Procedure

DARP™ is the Datalogic automatic replacement function designed to offer simplicity and rapidity in case of component substitution. Upon the connection to the system of a new SC6000 and readers, the full backup parameter set is automatically downloaded and the original configurations are immediately restored. No external actions are required, avoiding errors and time consuming operations. Readers can even be replaced during operations providing maximum availability.

The backup data is stored in a removable Compact-Flash memory which supports all devices, SC6000 controller, and readers. The entire station configuration can then be cloned to new systems when desired.



Product and Company names and logos referenced may be either trademarks or registered trademarks of their respective companies. We reserve the right to make modifications and improvements.

January 2009



9C0005448

DATALOGIC™
DATALOGIC AUTOMATION